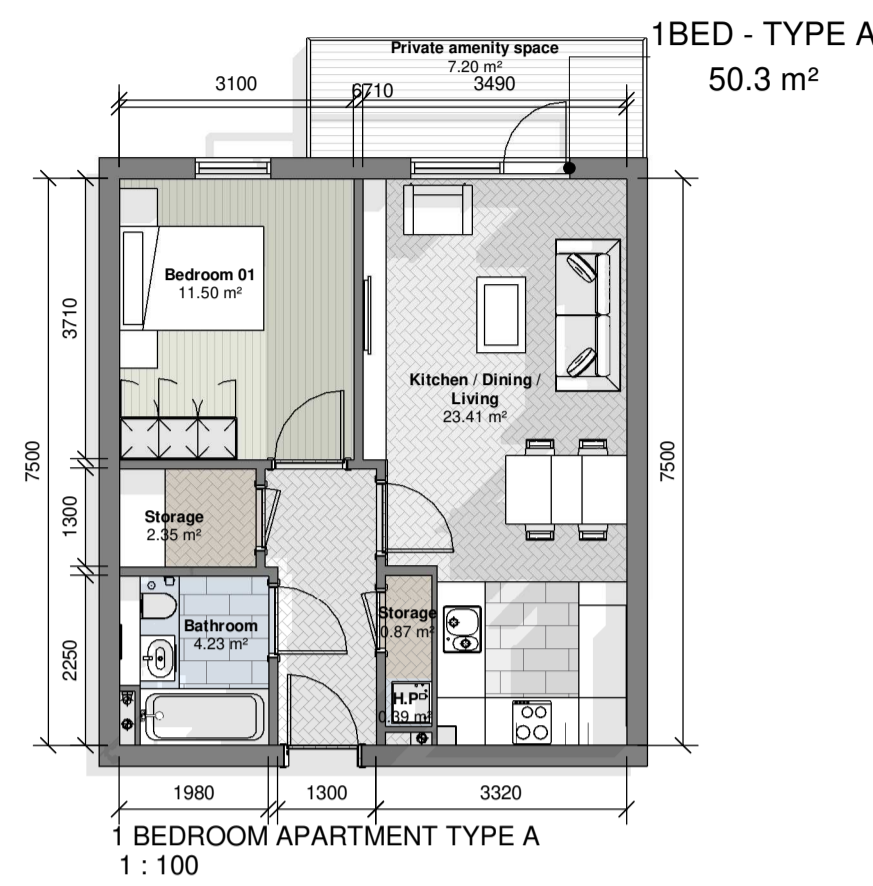


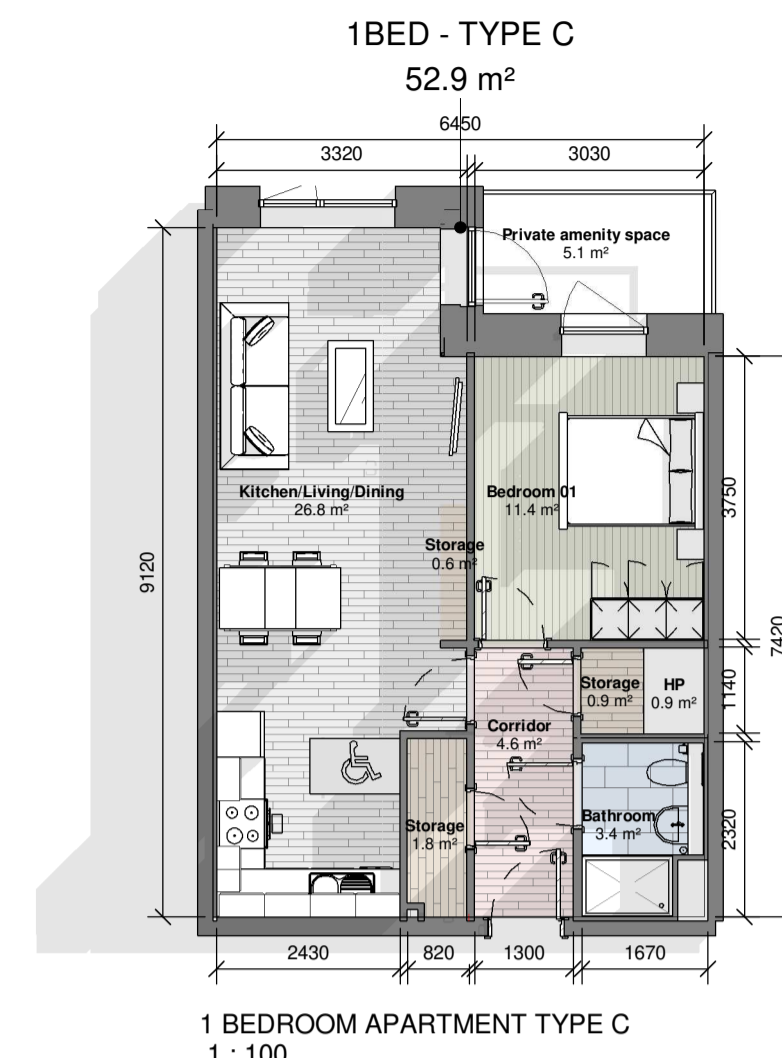
1 BED APARTMENT TYPOLOGIES



1 bed type A	
Name	Area
Bedroom 01	11.50 m <sup>2</sup>
Kitchen / Dining / Living	23.41 m <sup>2</sup>
Bathroom	4.23 m <sup>2</sup>
Storage	2.36 m <sup>2</sup>
H.P.	0.4 m <sup>2</sup>
Hall	5.0 m <sup>2</sup>

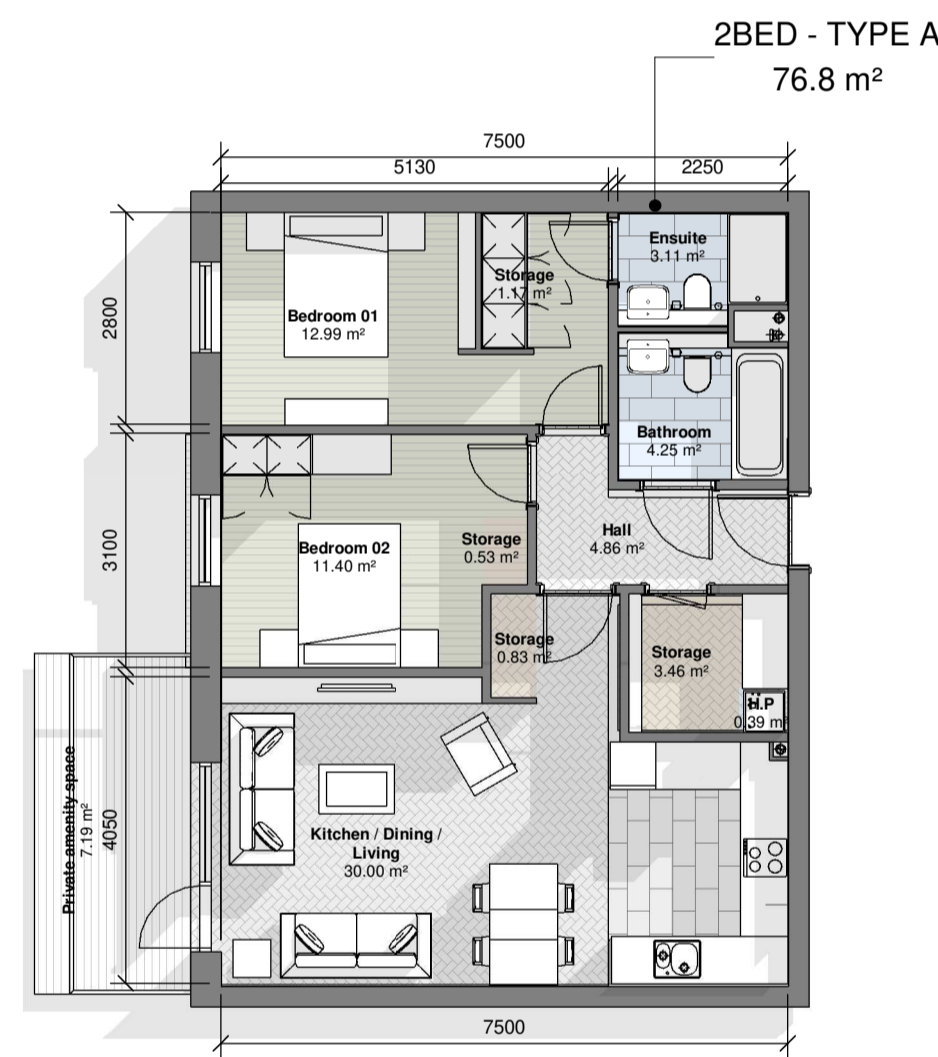


1 bed type B	
Name	Area
Bedroom 01	11.59 m <sup>2</sup>
Kitchen / Dining / Living	31.25 m <sup>2</sup>
Bathroom	4.29 m <sup>2</sup>
Storage	2.37 m <sup>2</sup>
H.P.	0.4 m <sup>2</sup>
Hall	5.6 m <sup>2</sup>

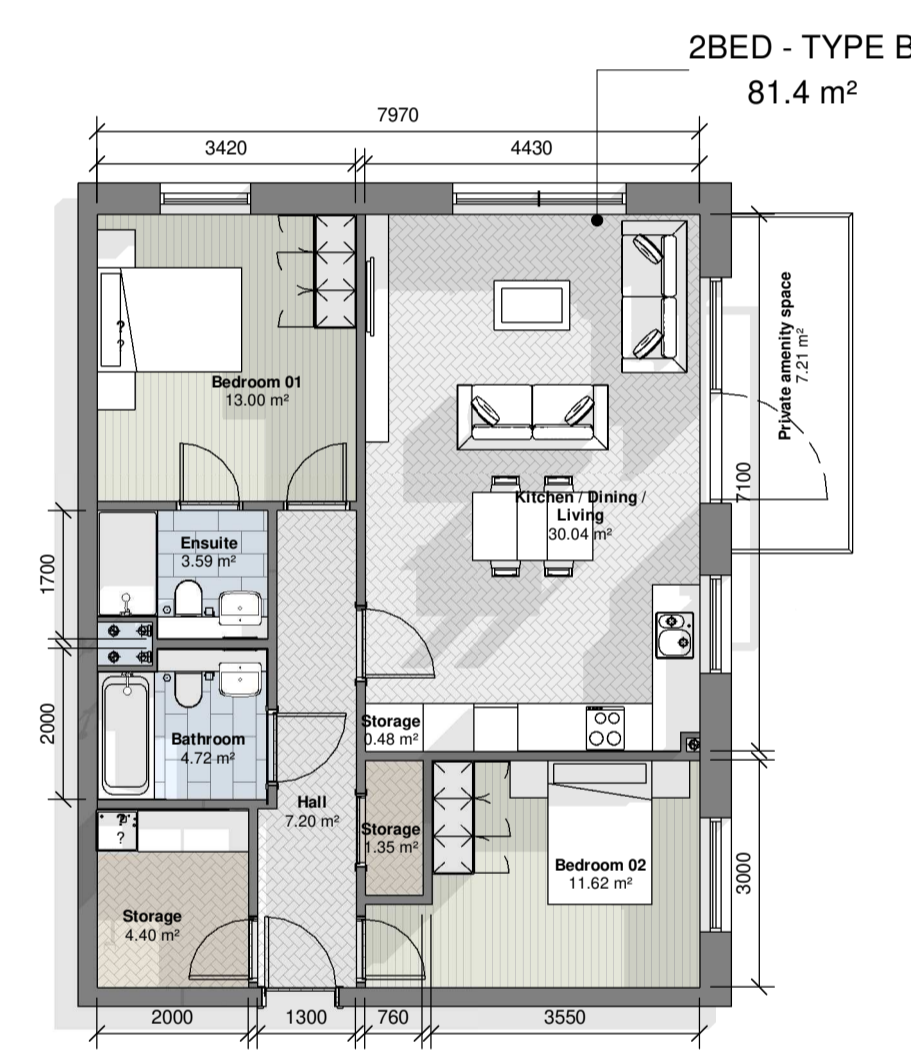


1 bed type C	
Name	Area
Kitchen/Living/Dining	26.8 m <sup>2</sup>
Bedroom 01	11.4 m <sup>2</sup>
Bathroom	3.4 m <sup>2</sup>
Corridor	4.6 m <sup>2</sup>
Storage	1.8 m <sup>2</sup>
Storage	0.9 m <sup>2</sup>
H.P.	0.9 m <sup>2</sup>
Storage	0.6 m <sup>2</sup>

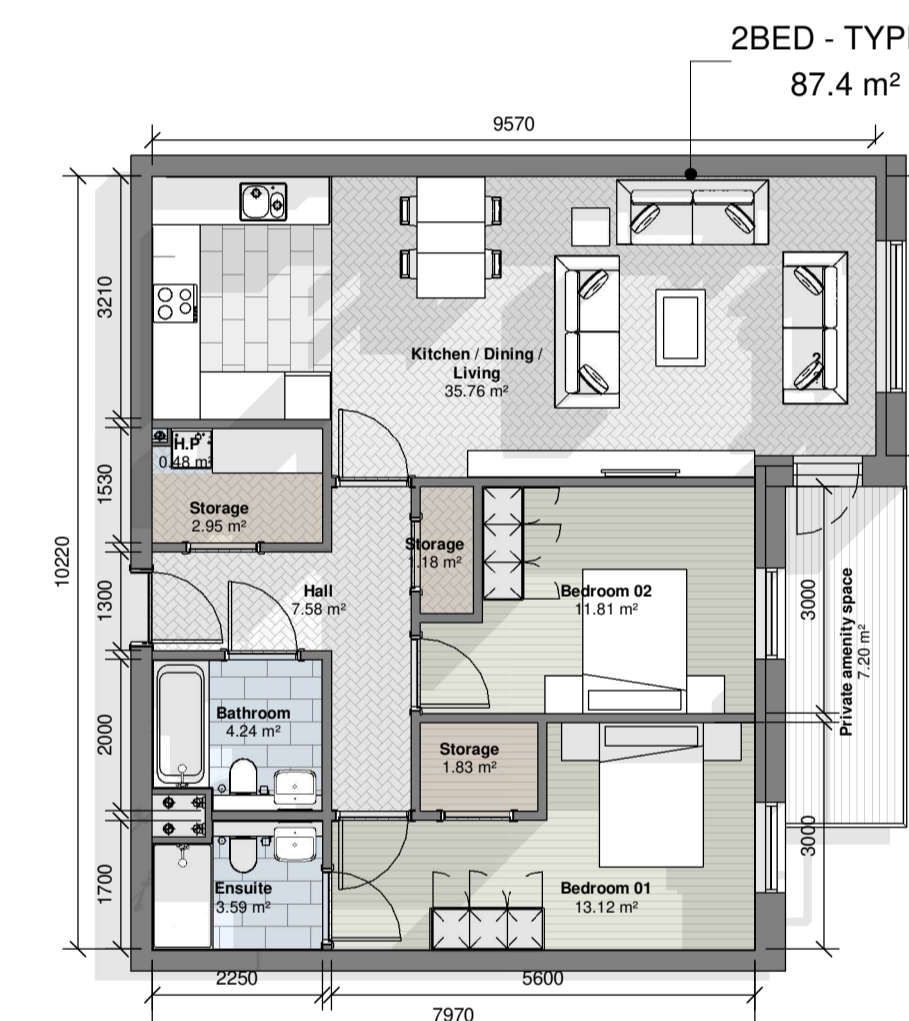
2 BED APARTMENT TYPOLOGIES



2 bed type A	
Name	Area
Bedroom 01	13.0 m <sup>2</sup>
Bedroom 02	11.4 m <sup>2</sup>
Storage	0.5 m <sup>2</sup>
Ensuite	3.1 m <sup>2</sup>
Bathroom	4.3 m <sup>2</sup>
Kitchen / Dining / Living	30.0 m <sup>2</sup>
Hall	4.9 m <sup>2</sup>
Storage	0.8 m <sup>2</sup>
Storage	1.2 m <sup>2</sup>
Storage	3.5 m <sup>2</sup>
H.P.	0.4 m <sup>2</sup>



2 bed type B	
Name	Area
Ensuite	3.6 m <sup>2</sup>
Bedroom 02	11.6 m <sup>2</sup>
Kitchen / Dining / Living	30.0 m <sup>2</sup>
Bedroom 01	13.0 m <sup>2</sup>
Storage	0.9 m <sup>2</sup>
Storage	4.4 m <sup>2</sup>
Storage	1.4 m <sup>2</sup>
Storage	0.5 m <sup>2</sup>
Bathroom	4.7 m <sup>2</sup>
Hall	7.2 m <sup>2</sup>
H.P.	0.3 m <sup>2</sup>

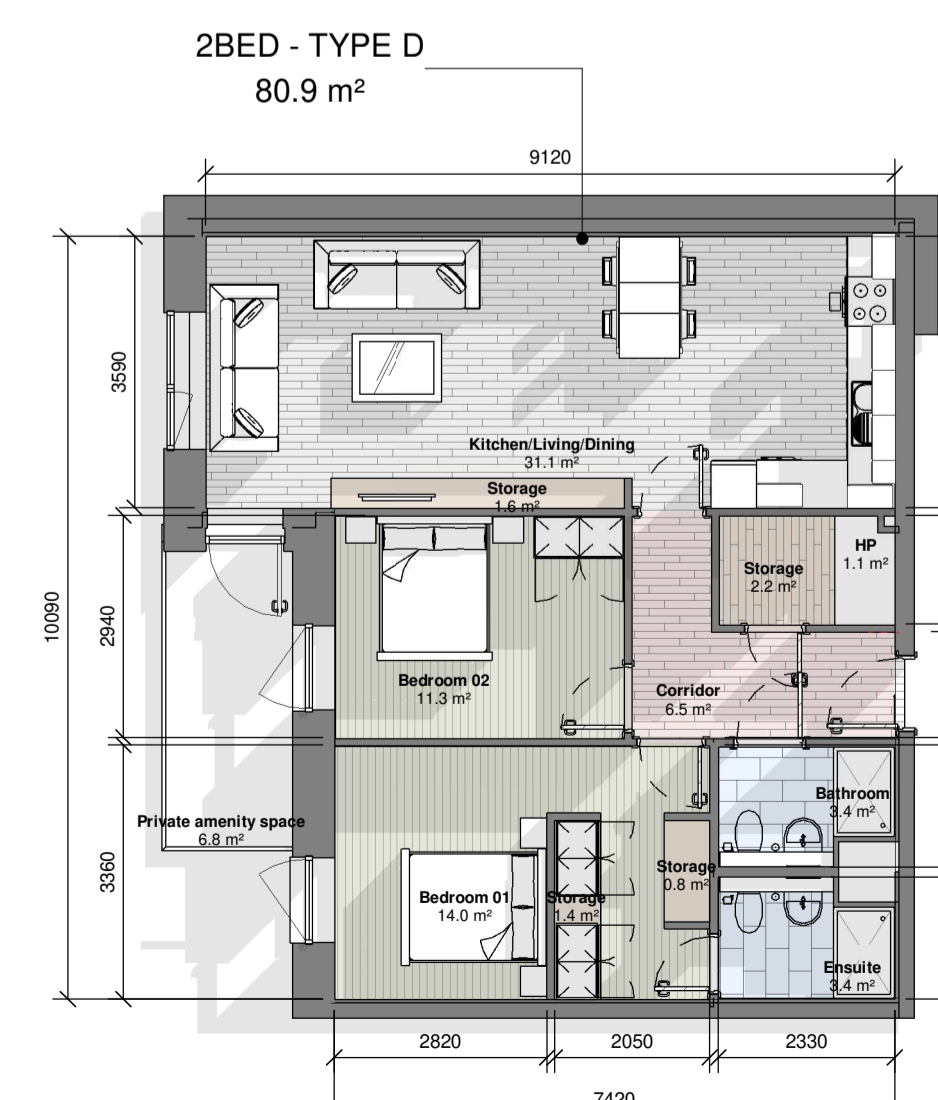


2 bed type C	
Name	Area
Bedroom 01	13.1 m <sup>2</sup>
Bedroom 02	11.8 m <sup>2</sup>
Storage	1.2 m <sup>2</sup>
Storage	1.8 m <sup>2</sup>
Ensuite	3.6 m <sup>2</sup>
Storage	3.0 m <sup>2</sup>
Kitchen / Dining / Living	35.8 m <sup>2</sup>
Hall	7.6 m <sup>2</sup>
H.P.	0.5 m <sup>2</sup>
Bathroom	4.2 m <sup>2</sup>

2 BEDROOM APARTMENT TYPE A  
1 : 100

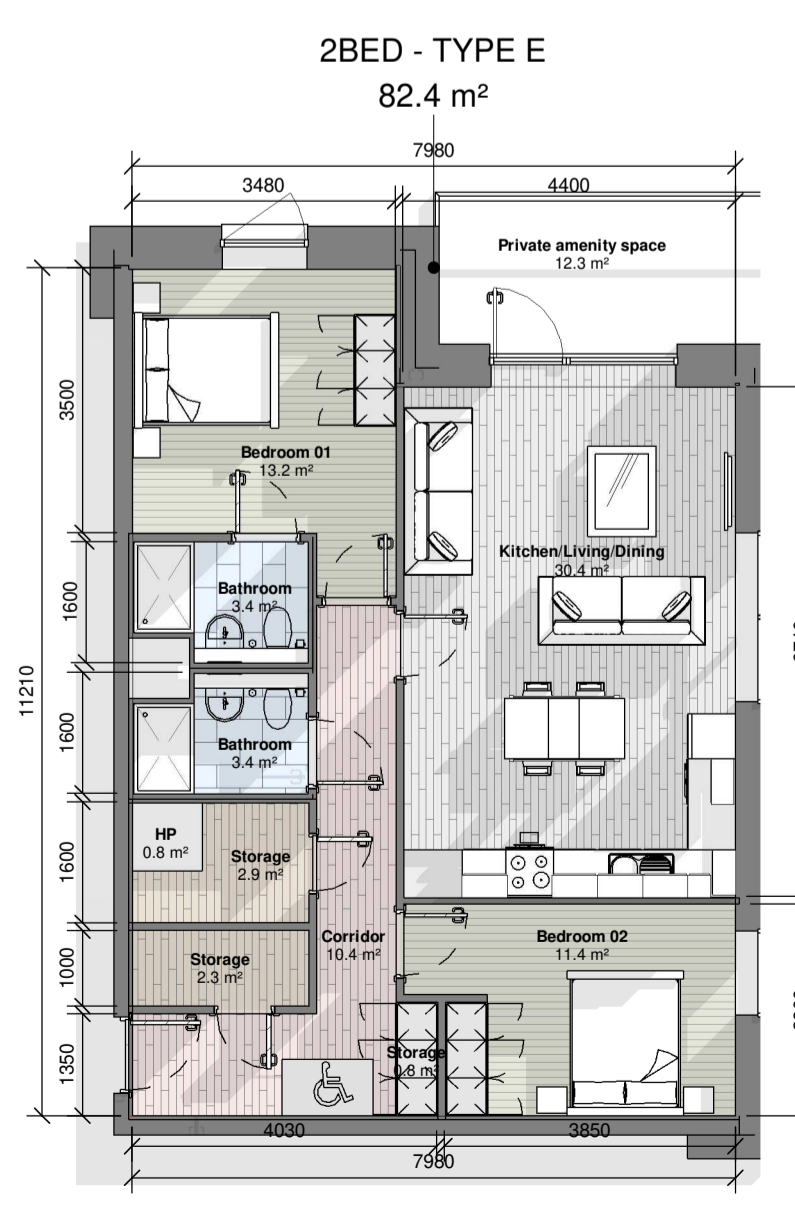
2 BEDROOM APARTMENT TYPE B  
1 : 100

2 BEDROOM APARTMENT TYPE C  
1 : 100



2 bed type D	
Name	Area
Kitchen/Living/Dining	31.1 m <sup>2</sup>
Bedroom 02	11.3 m <sup>2</sup>
Storage	2.2 m <sup>2</sup>
Bathroom	3.4 m <sup>2</sup>
Bedroom 01	14.0 m <sup>2</sup>
Corridor	6.5 m <sup>2</sup>
Storage	1.4 m <sup>2</sup>
H.P.	1.1 m <sup>2</sup>
Ensuite	3.4 m <sup>2</sup>
Storage	1.6 m <sup>2</sup>
Storage	0.8 m <sup>2</sup>

2 BEDROOM APARTMENT TYPE D  
1 : 100



2 bed type E	
Name	Area
Kitchen/Living/Dining	30.4 m <sup>2</sup>
Bedroom 02	11.4 m <sup>2</sup>
Storage	2.3 m <sup>2</sup>
Bedroom 01	13.2 m <sup>2</sup>
Corridor	10.4 m <sup>2</sup>
Storage	2.9 m <sup>2</sup>
H.P.	0.8 m <sup>2</sup>
Bathroom	3.4 m <sup>2</sup>
Bathroom	3.4 m <sup>2</sup>
Storage	0.8 m <sup>2</sup>

2 BEDROOM APARTMENT TYPE E  
1 : 100

**Notes:**  
 - Do not scale from this drawing. Use figured dimensions in all cases.  
 - Verify dimensions on site and report any discrepancies to the Architect immediately.  
 - This drawing is to be read in conjunction with the Architect's Specification.  
 - © This drawing is copyright and may only be reproduced with the Architect's permission.  
**Drawing Notes:**  
 Refer to windows, doors and curtain walling schedules for more information on details and types. Refer to all other referenced architectural drawings for more information.  
 Refer also to all other consultants drawings, specifications, reports and schedules including: Wash Goodfellow for structural and civil, Renaissance for MEP information, JGA for fire strategy information, Ryan & Associates for DAC information, AT Urbanism & Landscape for landscape plan boundary details & Amplitude Acoustics for Acoustics.

Rev.	Date	Drawn	Issue for Planning	Details of Issue / Revision
A	SEPT 21	A.R.	Issue for Planning	

**reddy architecture +urbanism**

Dartly Mills,  
Dartly Road  
Dublin 6,  
D06 Y0E3

T: +353 (0)1 498 7000  
W: www.reddyarchitecture.com  
E: info@reddyarchitecture.com

Client Details:  
**Voyage Property Limited,**  
**Ashbourne Hall,**  
**Dock Road,**  
**Limerick.**

Drawing Title:  
**Apartment Block Apartment Typologies**

Job No. <b>P20-133</b>	Sheet Size: <b>A1</b>	Scale @A1: <b>1 : 100</b>
Issue Date: <b>SEPT 21</b>	Drawn By: <b>A.Roche</b>	Reviewed By: <b>M.Freaney</b>
Status: <b>S02</b>	Purpose of Issue <b>3.0 Planning Application</b>	
Project-Originator-Zone-Level-Type-Role-Classification-Number <b>20133-RAU-ZZ-ZZ-DR-A-02.3050</b>	Revision	<b>A</b>